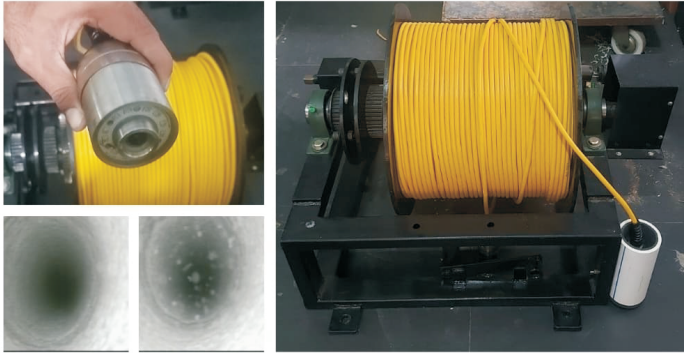


IGIS Make Borehole camera

Model : BHC 1/2/3



IGIS has introduced BHC-1 is a very handy device to quickly check the video capturing of bore well with clear vision of formation and strata of soil underneath with respect to its level in the open-wells and in bore-wells.

A Camera attached to the end of a cable, wound on a winch is lowered in to the well/borewell over a calibrated wheel attached to the counter mechanism. Moving the camera to the downward direction captures a clear picture /vision of the layers underneath even after fully submersed into the water. The depth of the lowered borehole camera from the ground can be read in metric scale on the counter mechanism. The captured images /videos can be saved and viewed later using android/ windows application on a tab/Laptop.

SPECIFICATIONS

Length of the Cable	: 100m / 200m / 300m
Indication	: Video capturing with respective and depth indication
Power Supply	: 12 Volts Battery
Display	: The captured images can be physically viewed and saved to view it later using an android/windows application on a Tab/Laptop
Camera	: 50mm Diameter, Stainless steel, Color Camera
Video format	: MP4
Working Temperature	: -40C to 60C
Lights	: LED Auto Backlight Compensation